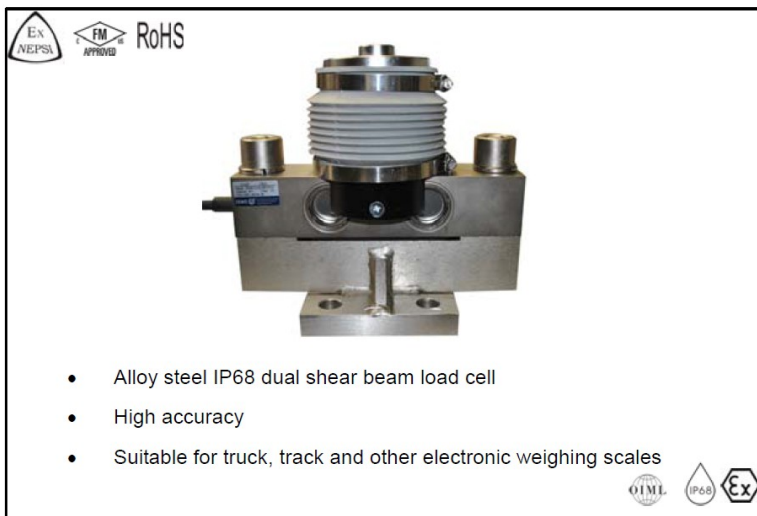


Datasheet: HM9B load cell

Capacity	Accuracy	Part-Number
10 t	C3	HM9B-C3-10t-XXB
20 t	C3	HM9B-C3-20t-XXB
25 t	C3	HM9B -C3-25t-XXB
30 t	C3	HM9B -C3-30t-XXB
40 t SE	C3	HM9B -C3-40tSE-XXB
40 t	C3	HM9B -C3-40t-XXB
50 t	C3	HM9B -C3-50t-XXB

XX can be replaced with either 12 or 20 as being the standard cable lengths.  
 Please add SC to the part-number if a standard current calibration is desired

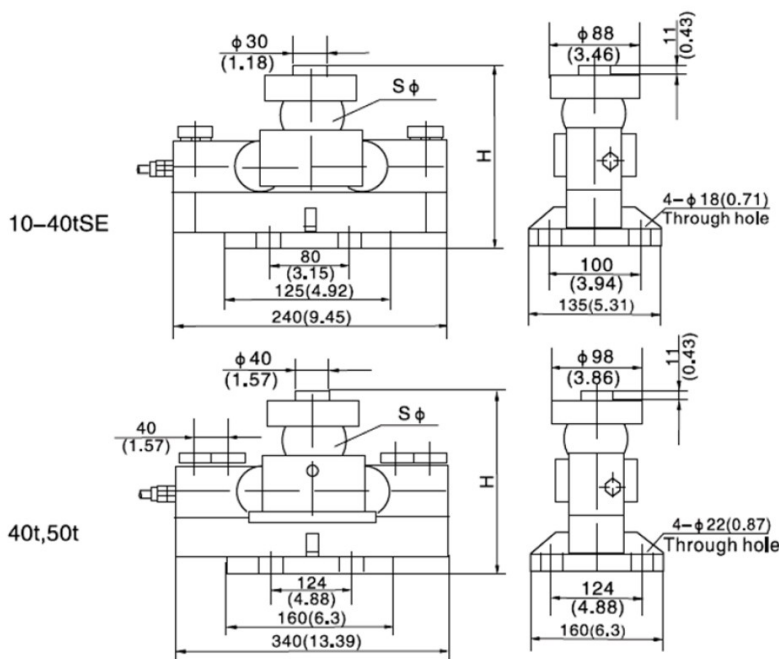


- Alloy steel IP68 dual shear beam load cell
- High accuracy
- Suitable for truck, track and other electronic weighing scales

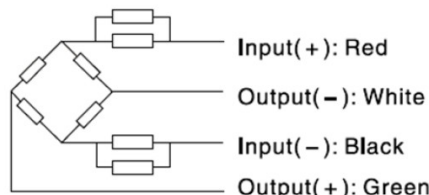
Specification:

		OIML R60 C3		
Accuracy class		2.0 ± 0.002		
Output sensitivity (= FS)	mV/V	2.0 ± 0.002		
Maximum capacity ( E <sub>max</sub> )	t	10, 20, 25	30, 40 SE, 40, 50	
Maximum number of load cell intervals ( n <sub>LC</sub> )	n <sub>LC</sub>	3000		
Ratio of minimum LC verification interval Y = E <sub>max</sub> / V <sub>min</sub>	Y	15000	7500	
Combined Error	%FS	≤ ± 0.023		
Minimum dead load	t	0		
Safe overload	of E <sub>max</sub>	150 %		
Ultimate overload	of E <sub>max</sub>	300 %		
Zero balance	of FS	≤ ± 1.5 %		
Excitation, recommended voltage	V	5 ~ 12		
Excitation maximum	V	18		
Input resistance	Ω	700 ± 7		
Output resistance	Ω	700 ± 7		
Insulation resistance	MΩ	≥ 5000 ( at 50VDC )		
Temperature range, compensated	°C	-10 ~ +40		
Temperature range, operating	°C	-35 ~ +65		
Element material		Alloy steel		
Ingress Protection (according to EN 60529)		IP68		
ATEX classification (optional)		II1G Ex ia II1C T4	II1D Ex iaD 20 T73°C	II3G nL IIC T4

Outline Dimensions in mm (Inch)



Capacity	10t	20t-40tSE	40t,50t
Dimension			
H	195 (7.68)	225 (8.86)	267 (10.51)
S φ	50 (1.97)	76 (2.99)	82 (3.22)



Wiring:

- Shielded, 4 conductor cable : φ 5.5mm.
- Standard cable length: 12m or 20m
- Cable type and cable length for customer's own application are available on request.
- Shield not connected to element.