

Datasheet: H8C load cell

OIML test certificate no. TC8012 revision 1  
 OIML C of C no. R60/2000 – NL1-12.12  
 NTEP certificate no. 12-028

Capacity	Accuracy	Type	Part-Number
100 kg	Cx	Bending	H8C-Cx-100kg-4B
250 kg	Cx	Bending	H8C-Cx-250kg-4B
500 kg	Cx	Shear	H8C-Cx-500kg-4B
1t	Cx	Shear	H8C-Cx-1.0t-4B
1,5t	Cx	Shear	H8C-Cx-1.5t-4B
2t	Cx	Shear	H8C-Cx-2.0t-4B
2.5t	Cx	Shear	H8C-Cx-2.5t-6B
3t	Cx	Shear	H8C-Cx-3.0t-6B
5t	Cx	Shear	H8C-Cx-5.0t-6B
10t	Cx	Shear	H8C-Cx-10t-6B

- Alloy steel IP67 beam load cell
- Adhesive sealed
- Suitable for platform weighing, bed weighing, etc.
- High accuracy, high reliability

RoHS, EM APPROVED, EX NEPSA, OIML, NTEP, IP67, Ex

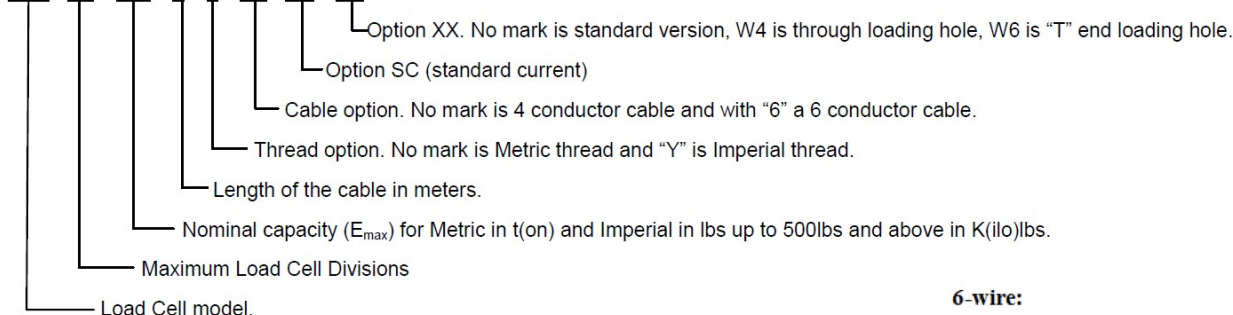
Specification:

Accuracy class		OIML R60 C3	OIML R60 C4	OIML R60 C5	
Output sensitivity ( = FS )	mV/V <sup>1</sup>	3.0 ± 0.003 <sup>1</sup>			
Nominal capacity ( E <sub>max</sub> )	t <sup>2</sup>	0.1, 0.25, 0.5, 1, 1.5, 2, 2.5, 3, 5, 10	0.1, 0.25, 0.5, 1, 1.5, 2, 2.5,	3, 5, 10	
Maximum number of load cell intervals ( n <sub>LC</sub> )		3000	4000	5000	
Ratio of minimum LC verification interval Y = E <sub>max</sub> / v <sub>min</sub>	Y	10.000	15.000	20.000	18.000
Combined Error	%FS	≤ ± 0.023	≤ ± 0.0175	≤ ± 0.014	
Minimum dead load	t	0			
Safe overload	of E <sub>max</sub>	150 %			
Ultimate overload	of E <sub>max</sub>	300 %			
Zero balance	of FS	≤ ± 1.0 %			
Excitation, recommended voltage	V AC/DC	5 ~ 12			
Excitation maximum	V AC/DC	18			
Input resistance	Ω	350 ± 3.5			
Output resistance	Ω	350 ± 3.5			
Insulation resistance	MΩ	≥ 5000 ( at 50VDC )			
Temperature range, compensated	°C	-10 ~ +40			
Temperature range, operating	°C	-35 ~ +65			
Element material		Alloy steel nickel plated			
Ingress Protection (according to EN 60529)		IP67			
Recommended torque on fixation bolts	Nm	M12: 100	M18: 200	M24: 700	
ATEX classification (optional)		II1G Ex ia II1C T4	II1D Ex iaD 20 T73°C	II3G nL IIC T4	

Note 1: Current calibration (SC) is optional. Note 2: Imperial capacities also available.

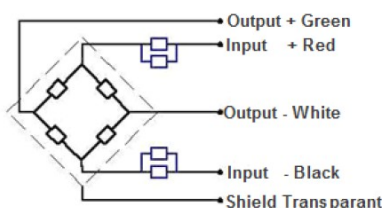
Ordering Info:

H8C - C3 - 1.0t - 4 - - BX - SC - XX

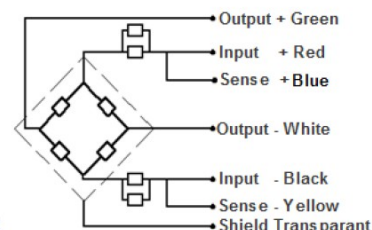


Shielded, 4 conductor cable: Ø 5mm.  
 Standard cable length: 4m up to 2t and 6m for the higher capacities.  
 Shield in not connected to the element.  
 Cable type and length can be changed on customer's request.

4-wire:



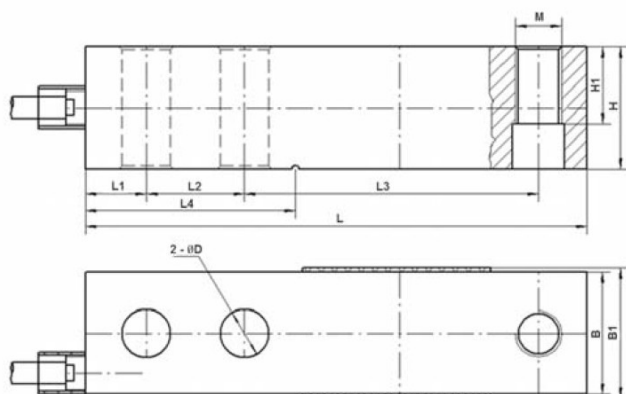
6-wire:



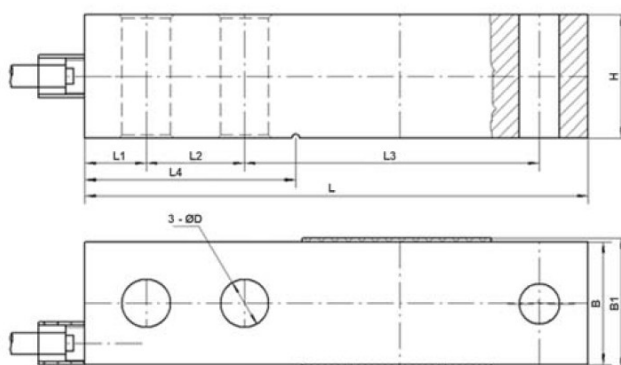
## Datasheet: H8C load cell

### Outline Dimensions in mm

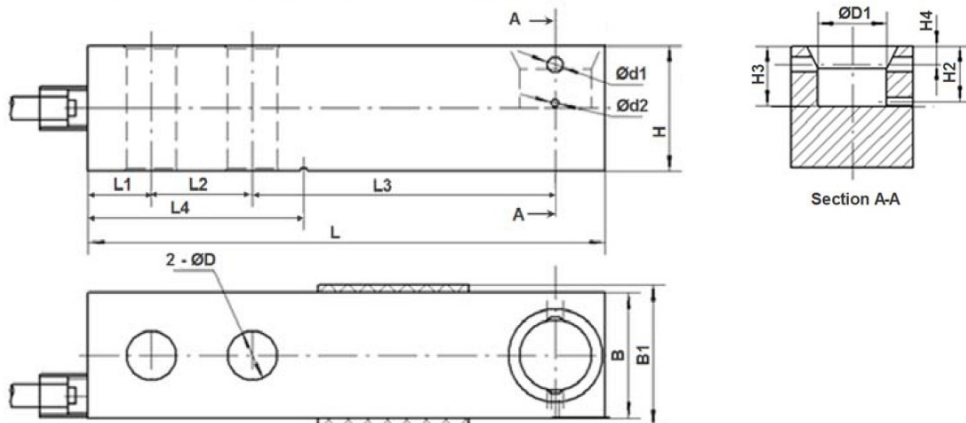
Standard version



Option W4 (through loading hole)



Option W6 ("T" end loading hole)



Capacity	L	L1	L2	L3	L4	B	B1	H	H1	H2	H3	H4	ØD	ØD1	Ød1	Ød2	M
0.1t – 2t	130	15.8	25.4	76.2	54.2	31.8	34	31.8	15.8	14.5	15.8	4.8	13.5	18	4	2	M12x1.75
200lb – 4klb	130	15.8	25.4	76.2	54.2	31.8	34	31.8	15.8	14.5	15.8	4.8	13.5	18	4	2	½-20UNF
5Klb (SE)	130	15.8	25.4	76.2	54.2	31.8	34	31.8	15.8	14.5	15.8	4.8	13.5	18	4	2	½-20UNF
2.5t – 5t	171.5	19.1	38.1	95.3	77.2	38.1	40	38.1	18.8	17.5	18.8	4.8	19.8	25	4	2	M18x1.5
5Klb – 10Klbs	171.5	19.1	38.1	95.3	77.2	38.1	40	38.1	18.8	17.5	18.8	4.8	19.8	25	4	2	¾-16UNF
10t	222.3	25.4	50.8	120.7	101.6	50.8	52.4	50.8	25.4				26				M24x2
20Klb	222.3	25.4	50.8	120.7	101.6	50.8	52.4	50.8	25.4				26				1-12UNF