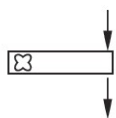
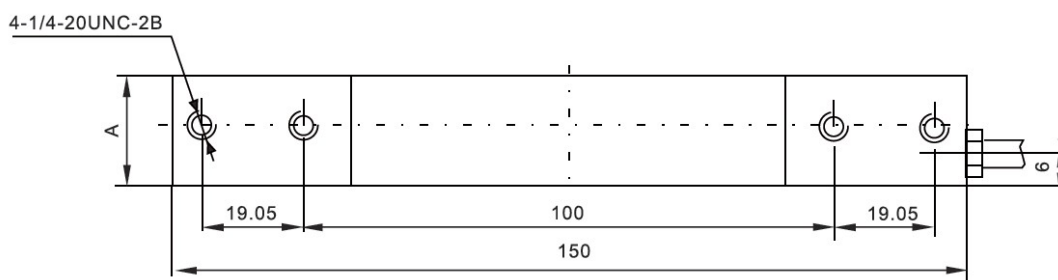
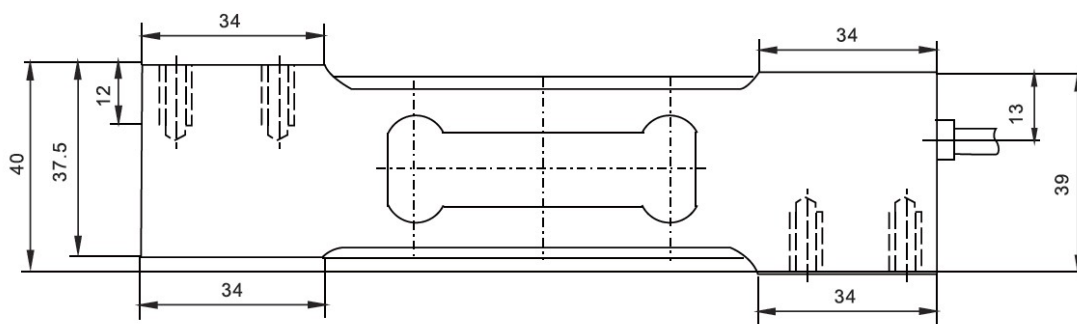


ILY-SS Loadcell

ILY-SS



| Rated Load (kg) | A |
|-----------------|------|
| 8,10,15,20,30, | 20 |
| 50,100 | 25.2 |



Blending scale, packing scale, dynamic testing system, platform scale

TECHNICAL PARAMETER

OAP version 4Wires:Exc+(Blue);Exc-(Black);Sig+(White);Sig-(Red)

| | | | |
|------------------------|------------------------|--------------------------------|-----------------|
| Rated capacities(Emax) | 8,10,15,20,30,50,100kg | Temperature range, compensated | -10°C~+40°C |
| Sensitivity | 2.0±0.2mV/V | Temperature range, operating | -30~+70°C |
| Total error | ±0.03%F.S | Maximum safe overload | 150%F.S |
| Creep error (30min) | ±0.03%F.S | Ultimate overload | 200%F.S |
| Zero balance | ±1%F.S | Excitation,recommended | 10~12V DC |
| TC ZERO | ±0.02%F.S/10°C | Excitation,maximum | 15V DC |
| TC SPAN | ±0.02%F.S/10°C | Protection class | IP65 |
| Input resistance | 400±20 Ω | Construction | Stainless Steel |
| Output resistance | 352±3 Ω | Cable | Length: 3m |
| Insulation resistance | ≥5000M Ω | | Diameter: φ 5mm |