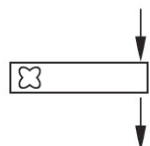
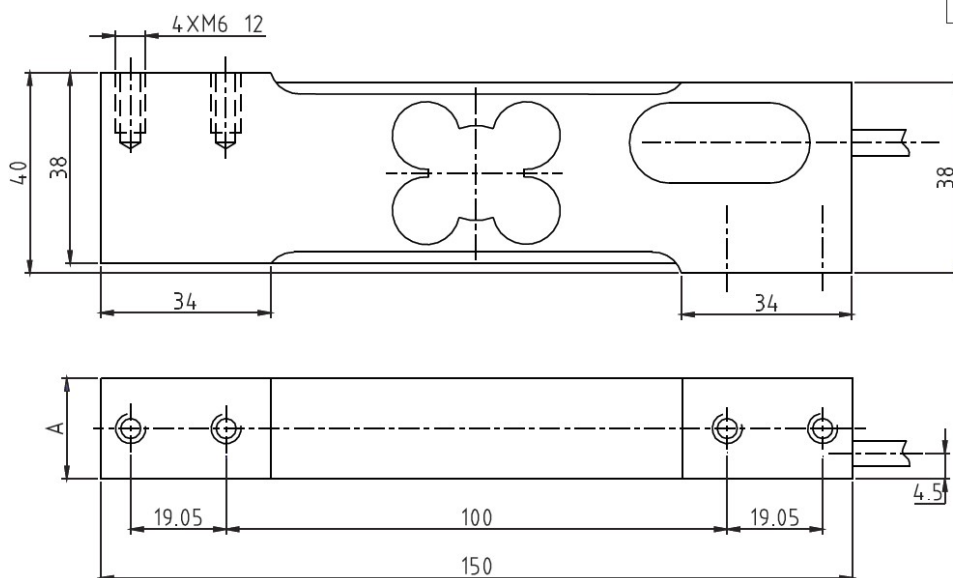


AMIB Load cell

AMIB



| kg | A |
|----------|----|
| 8 ~ 30 | 20 |
| 50 ~ 200 | 25 |



All kinds of platform scales, bench scale

TECHNICAL PARAMETER | OAP version 4Wires:Exc+(Blue);Exc-(Black);Sig+(White);Sig-(Red)

| | | | |
|------------------------|----------------------------------|---------------------------------|-----------------|
| Rated capacities(Emax) | 8,10,15,20,30,50,60,75,100,200kg | Temperature range, compensated | -10°C~+40°C |
| Sensitivity | 2.0±0.2mV/V | Temperature range, operating | -20°C~+50°C |
| Accuracy class | OIML C3(approving) | Maximum safe overload | 150%Emax |
| Creep error (30min) | ±166ppm | Ultimate overload | 300%Emax |
| Zero balance | ±3%Emax | Excitation,recommended | 10V DC |
| TC ZERO | ±17.5ppm/°C | Excitation,maximum | 15V DC |
| TC SPAN | +20°C~+40°C, ±17.5ppm/°C | Protection class | IP65 |
| | -10°C~+20°C, ±11.67ppm/°C | Construction | Aluminium |
| Input resistance | 404 ± 15Ω | Cable | Length:1.8m |
| Output resistance | 350 ± 3 Ω | | Diameter: φ 5mm |
| Insulation resistance | ≥2000 MΩ (50V DC) | Installation torque,recommended | 10N · m |
| Max platform size | 300 × 400mm | | |