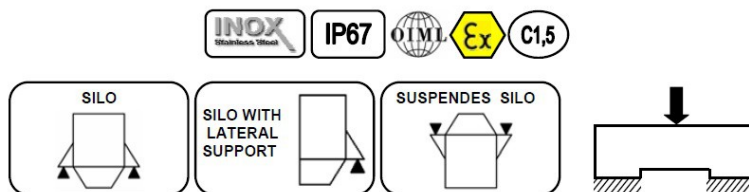


Model: CLS



APPLICATION:

High capacity and silos

CAPACITY RANGE:

50t - 80t - 100t

MATERIAL:

Stainless steel

ENVIRONMENTAL PROTECTION:

IP67

APPROVALS:

According to OIML - R60



CHARACTERISTICS

Manufactured in stainless steel with IP67 protection.
 Mounting Kit in Stainless Steel or Zinc Steel.
 Hostile environmental cable. Mounting compatibility.

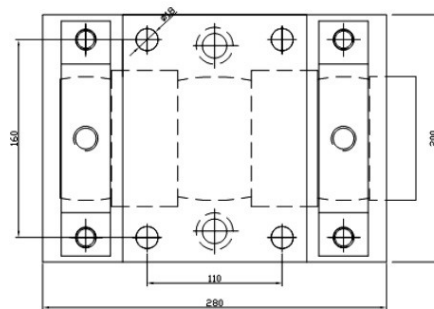
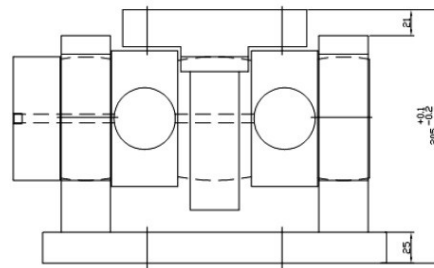
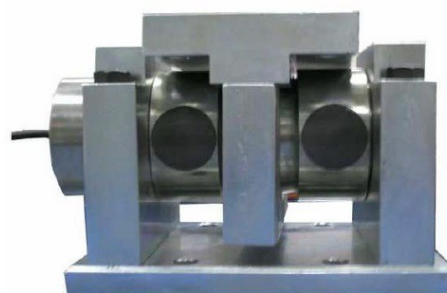
APPLICATIONS

The CLS Model it's manufactured to maintain its characteristics in external environments. This model is applied to control silos of high capacity & replaces level indicators with more accuracy and reliability.

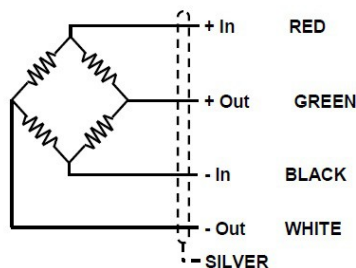
OPTIONS

- Length of the cable is optional.
- 10 to 100 °C temperature tolerance.
- ATEX option EC-Type examination certificate CEC 11 ATEX 040 X according directive 94/9/EC
-  II 1G EExia IIC T6 (Ta-20+40°C)
TX (Ta-20+65°C)
-  II 1D tD A20 TX°C (Ta-20+40°C)
TX°C (Ta-20+65°C)

For more information look up the EC-type examination, and documentation. Consult for special requirements.



Dimensions in mm



Model: CLS

GENERAL TECHNICAL CHARACTERISTICS FOR $g=9,8031 \text{ m/s}^2$		
OIML Class	C2	UNITS
Divisions nLC	2000	
Minimum Dead load Emin	0	kg
Z= Emax / 2DR	2000	
Combined error	0,03	± % of NL
Rated Capacity Emax	50, 80, 100	tons
Repetability	0,01	± % of NL
Security Overload	100	± % of NL
Maximum Overload	200	± % of NL
Lateral Load	100	± % of NL
Rated Input Voltage	10	V dc/dc
Input Voltage Range	5..15	V dc/dc
Input Resistance R _{Lc}	350 ± 5	Ω
Output Resistance	350 ± 5	Ω
Sensibility	2	mV/V
Output without load	1	± % of NL
Normal Output	0,25	± % of value
Creep NL (30 min.)	0,04	± of load
Temperature Range : Compensated	-10 ... 50	°C
: Operating	-30 ... 85	°C
: Storage	-30... 90	°C
Max Temperature effect : On Sensitivity	0,0015	% Emax / °C
: On Zero	0,003	% Emax / °C
Cable Length	10	m
Cable features	<ul style="list-style-type: none"> - Teflon-insulated conductors - Shield with tinned copper braid 95% - PVC cover black and 7mm diameter - Operating temperature -15 ° + 80 ° - Bending radius 15Xd 	
Environmental Protection	IP67 - DIN 40050	